



Product Catalog

Manufacturing EDD Turbine Flow Meters Since 1980

The information in this document is reviewed regularly and any necessary changes will be incorporated in the next revision.
We welcome any suggestions for improvement.

This manual is for the exclusive use of Electronic Data Devices customers and distributors. The reproduction, transmission or use of this document or its contents is not permitted without the expressed written permission of Electronic Data Devices.

© Copyright 2004 Electronic Data Devices

January 2004



Phone
432-366-8699

Fax
432-366-1106

P.O. Box 12128
Odessa, Texas 79768
USA

E-mail
rk@eddevices.com

Website
www.eddevices.com

Electronic Data Devices Contacts

Bob Williams
President

Office 432-366-8699
Fax 432-366-1106

Hal Hulett
Manager

Office 432-366-8699
Fax 432-366-1106

Mike Jolly
Service Manager

Office 432-366-8699
Fax 432-366-1106



Electronic Data Devices

Phone
432-366-8699

Fax
432-366-1106

P.O. Box 12128
Odessa, Texas 79768
USA

E-mail
rk@eddevices.com

Website
www.eddevices.com

Turbine Flow Meters Flow Range								
Size								Max Output
Inch	MM	GPM	BPM	BPD	LPM	M ³ /D	Pulses P/Gal	Frequency Pulses P/ Sec
3/8	10	.3 – 3	.007 – .07	10 – 100	1.14 – 11.36	1.6 – 16	22000	1100
1/2	13	.75 – 7.5	.01 – .17	25 – 250	2.84 – 28.39	4 – 40	14500	1815
3/4	19	2 – 15	.05 – .33	68 – 515	7.57 – 56.78	11 – 80	2950	740
7/8	22	3 – 30	.07 – .71	100 – 1000	11.36 – 113.56	16 – 160	2350	1175
1	25	5 – 50	.11 – 1.19	170 – 1700	18.93 – 189.27	27 – 270	900	750
1 1/2	38	15 – 180	.35 – 4.3	515 – 6000	56.78 – 681.35	80 – 1100	325	975
2	51	40 – 400	.9 – 9.3	1300 – 13000	151 – 1514	210 – 2100	55	365
3	76	60 – 600	1.4 – 14.3	2100 – 21000	227 – 2271	320 – 3200	57	570
4	102	100 – 1200	2.4 – 28.5	3400 – 41000	380 – 4542	545 – 6541	30	600
6	152	200 – 2500	4.7 – 60	6800 – 86000	757 – 9464	1090 – 13628	7	290
8	203	350 – 3500	8.3 – 83	12000 – 120000	1325 – 13250	1907 – 19078	3	175
10	550	550 – 5500	13 – 130	19000 – 180000	1892 – 18926	2725 – 27255	1.6	147

Material Specifications	
Flow Meter Body	316 S.S. or A-286 Alloy
Support Vanes	316 S.S.
Rotor	CD4MCu
Sleeve Bearings	Tungsten Carbide
Shaft	Tungsten Carbide
Thrust Ball	Ceramic
Performance Specifications	
Repeatability	Within $\pm 0.1\%$ of indicated flow throughout the linear flow range
Accuracy	Within $\pm 1\%$ of reading Note 3/8" $\pm 2\%$



Electronic Data Devices

Turbine Flow Meters

P.O. Box 12128
Odessa, Texas 79768
USA

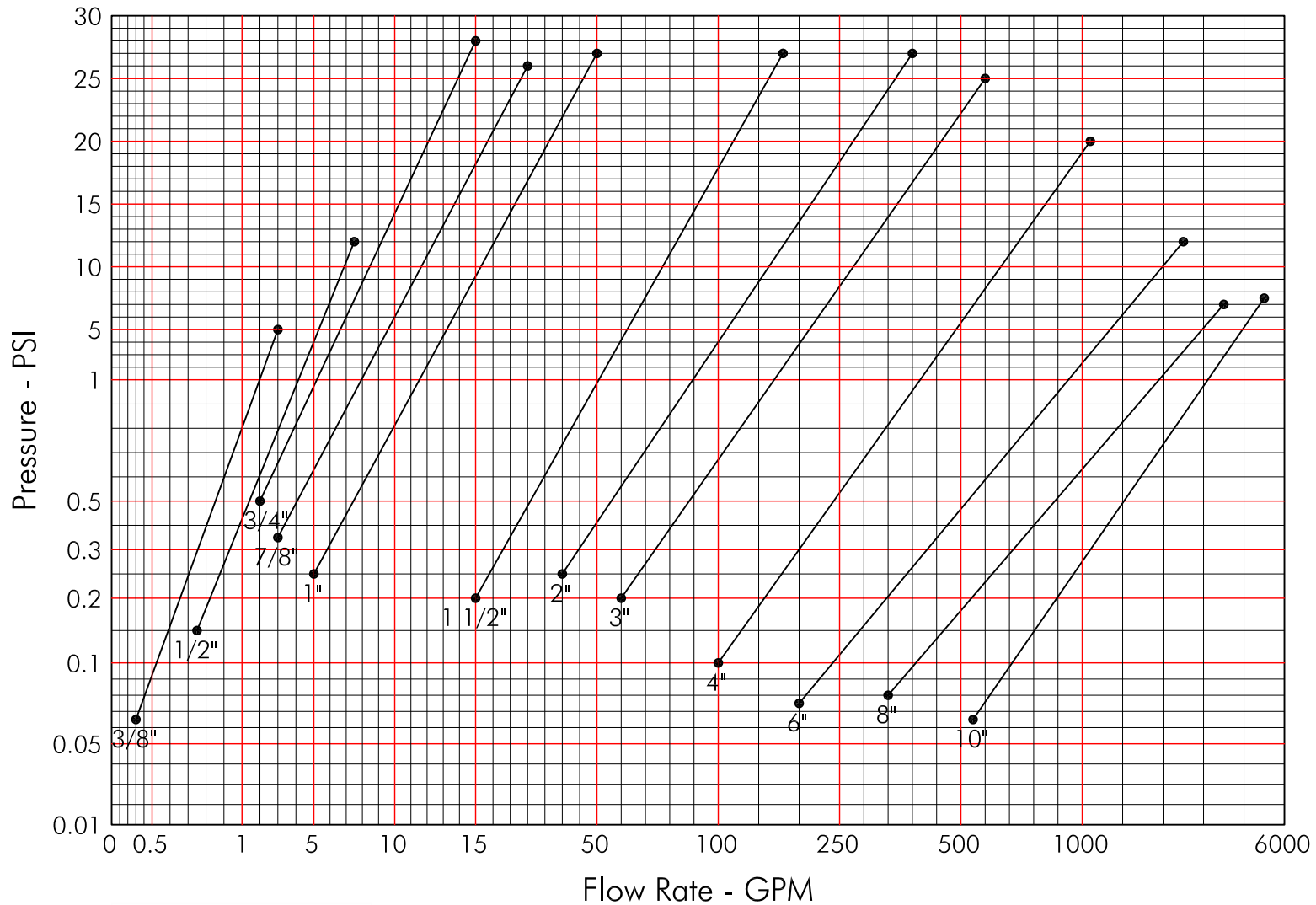
Phone
432-366-8699

Fax
432-366-1106

Email
rk@eddevices.com

Website
www.eddevices.com

Pressure Drop Curves



Electronic Data Devices
Turbine Flow Meters

Phone
432-366-8699

Fax
432-366-1106

P.O. Box 12128
Odessa, Texas 79768
USA

E-mail
rkw@eddevices.com

Website
www.eddevices.com



Electronic Data Devices

Turbine Flow Meters



BF Series Turbine Flow Meters

Electronic Data Devices offers a complete line of turbine flow meters that are available with ranges from 0.3 GPM to 5500 GPM covering a wide range of measurement applications. Our turbine flow meters are manufactured to the highest quality standards, and are available with a wide range of end connections compatible with many applications. Some of the typical applications include: oilfield waterflood, production, well servicing, pipelines, mining, chemicals, food and beverage industry, and most other liquid applications.

BF series meters are available in the following sizes

All between flange series meters are available for use with 150# - 1500# RF ANSI flanges with pressure ratings of 275 - 3600 psi.

.75" X 2"

1.5" X 2"

3" X 3"

6" X 6"

1" X 2"

2" X 2"

4" X 4"

8" X 8"

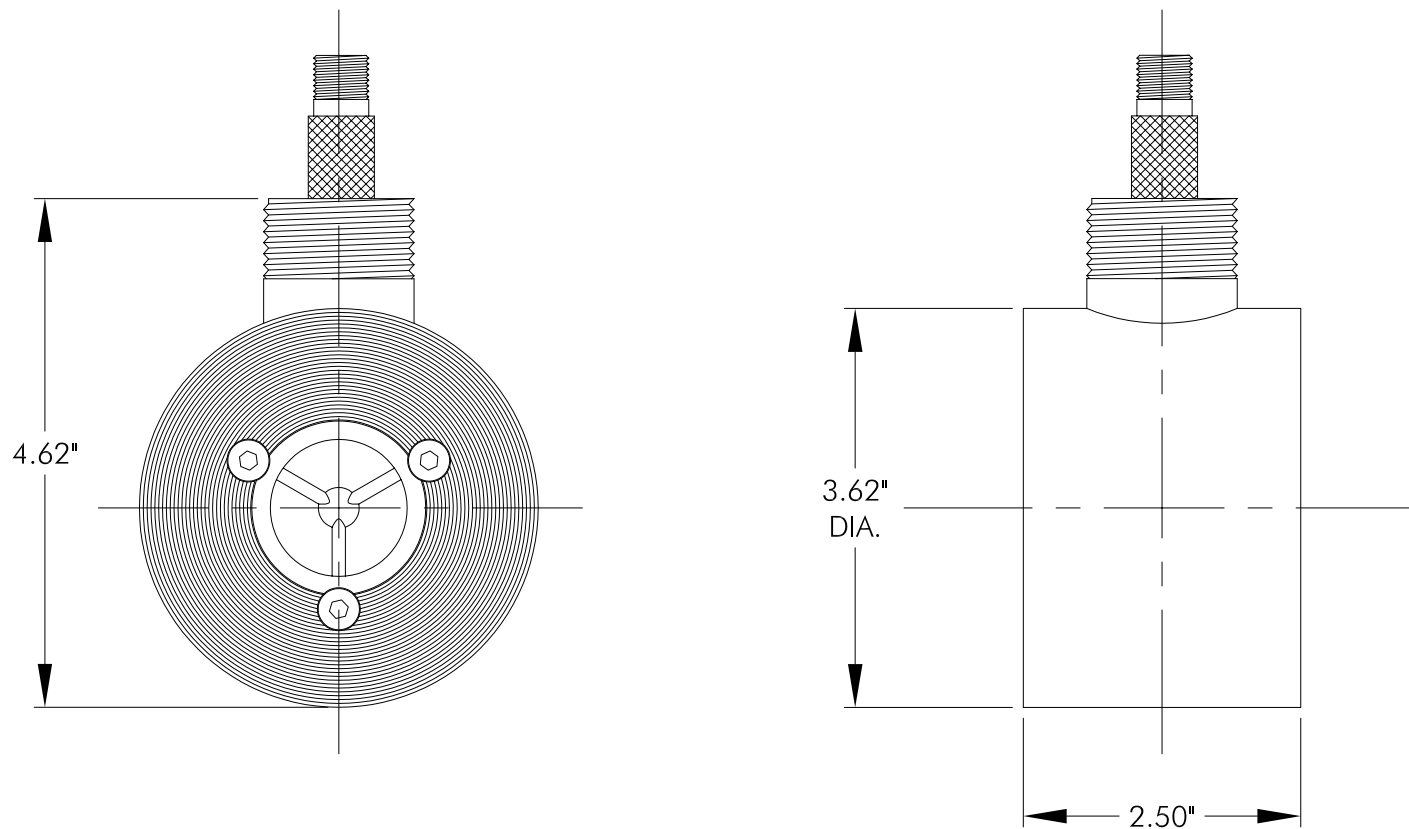
P.O. Box 12128
Odessa, Texas 79768
USA

• Phone
432-366-8699

• Fax
432-366-1106

• Email
rk@eddevices.com

• Website
www.eddevices.com



NOTE: DRAWING NOT TO SCALE

SPECIFICATIONS:

FLOW RATE: 0.75-7.5 GPM

PRESSURE RATING: AS PER FLANGE RATING

NOTE:

1/2" TURBINE REPAIR KIT PART NUMBER: 6.050

FLOW METER INSTALLATION DRAWING

1/2" x 2" BETWEEN FLANGE FLOW METER WITH RAISED FACE ENDS, PART NO. 6.0500

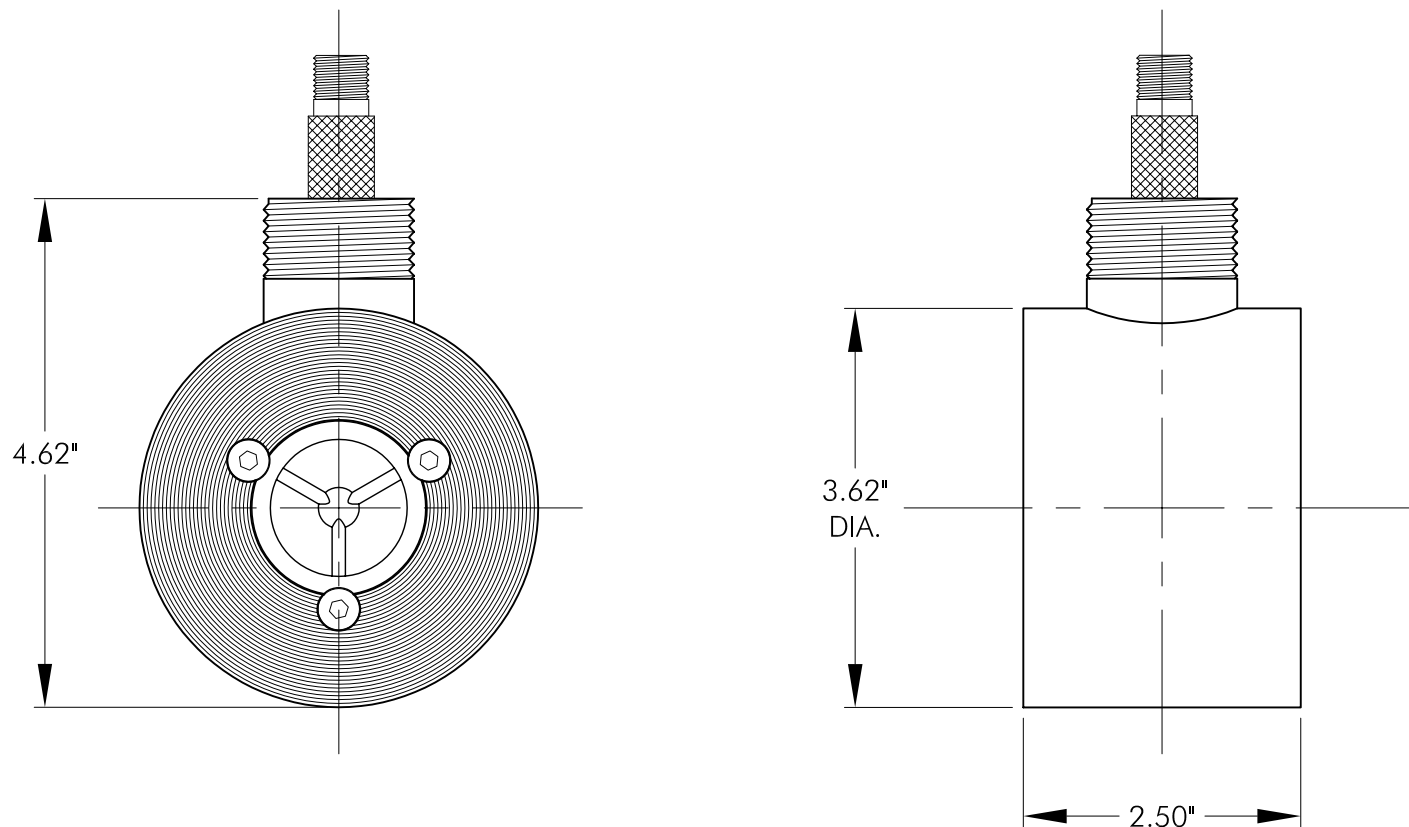
P.O. Box 12128

Odessa, TX 79768

Phone: 432-366-8699 Fax: 432-366-1106

E-mail: rkw@eddevices.com Website: www.eddevices.com





NOTE: DRAWING NOT TO SCALE

SPECIFICATIONS:

FLOW RATE: 2-15 GPM

PRESSURE RATING: AS PER FLANGE RATING

NOTE:

3/4" TURBINE REPAIR KIT PART NUMBER: 6.075

FLOW METER INSTALLATION DRAWING

3/4" x 2" BETWEEN FLANGE FLOW METER WITH RAISED FACE ENDS, PART NO. 6.0750

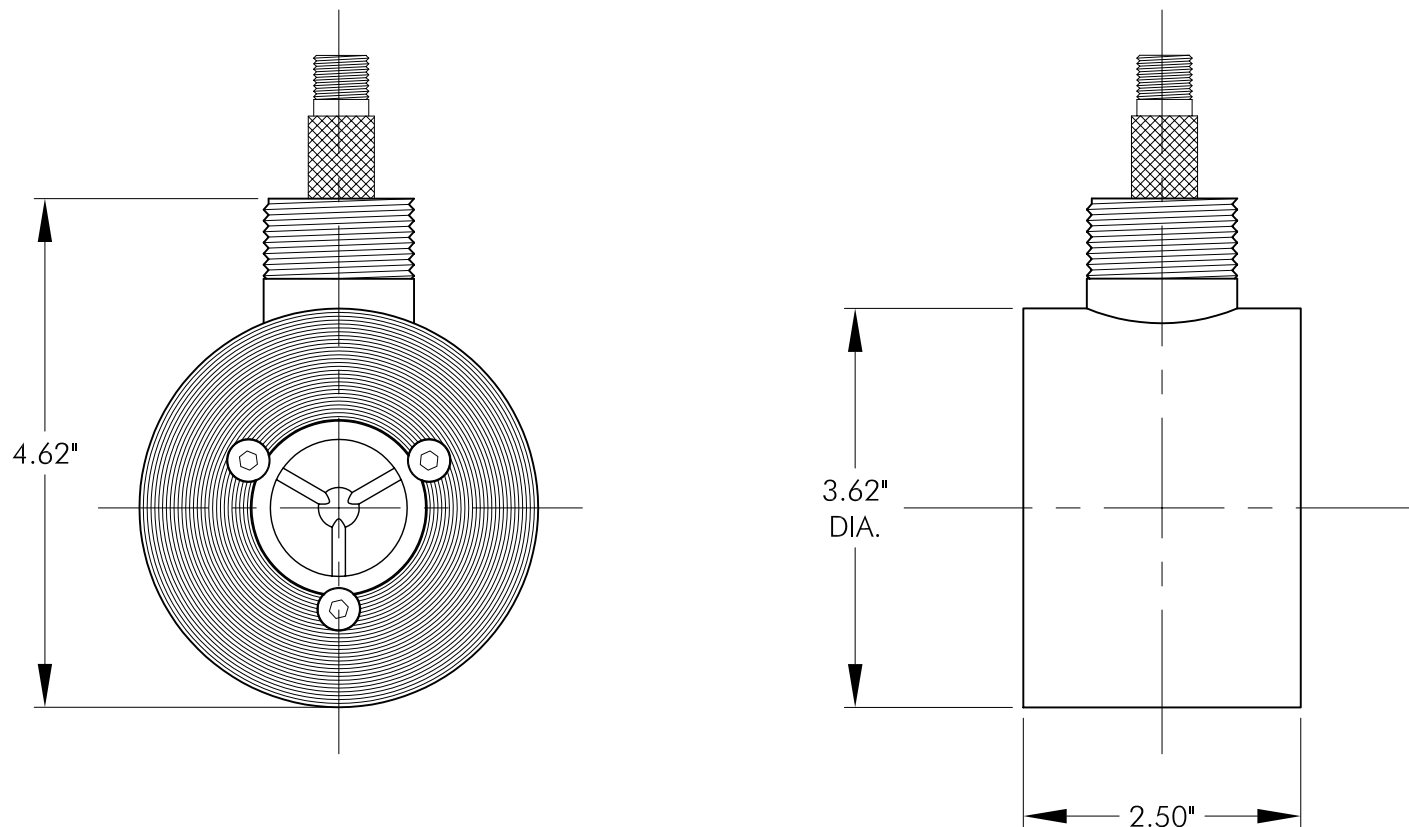
P.O. Box 12128

Odessa, TX 79768

Phone: 432-366-8699 Fax: 432-366-1106

E-mail: rkw@eddevices.com Website: www.eddevices.com





NOTE: DRAWING NOT TO SCALE

SPECIFICATIONS:

FLOW RATE: 3-30 GPM

PRESSURE RATING: AS PER FLANGE RATING

NOTE:

7/8" TURBINE REPAIR KIT PART NUMBER: 6.087

FLOW METER INSTALLATION DRAWING

7/8" x 2" BETWEEN FLANGE FLOW METER WITH RAISED FACE ENDS, PART NO. 6.0870

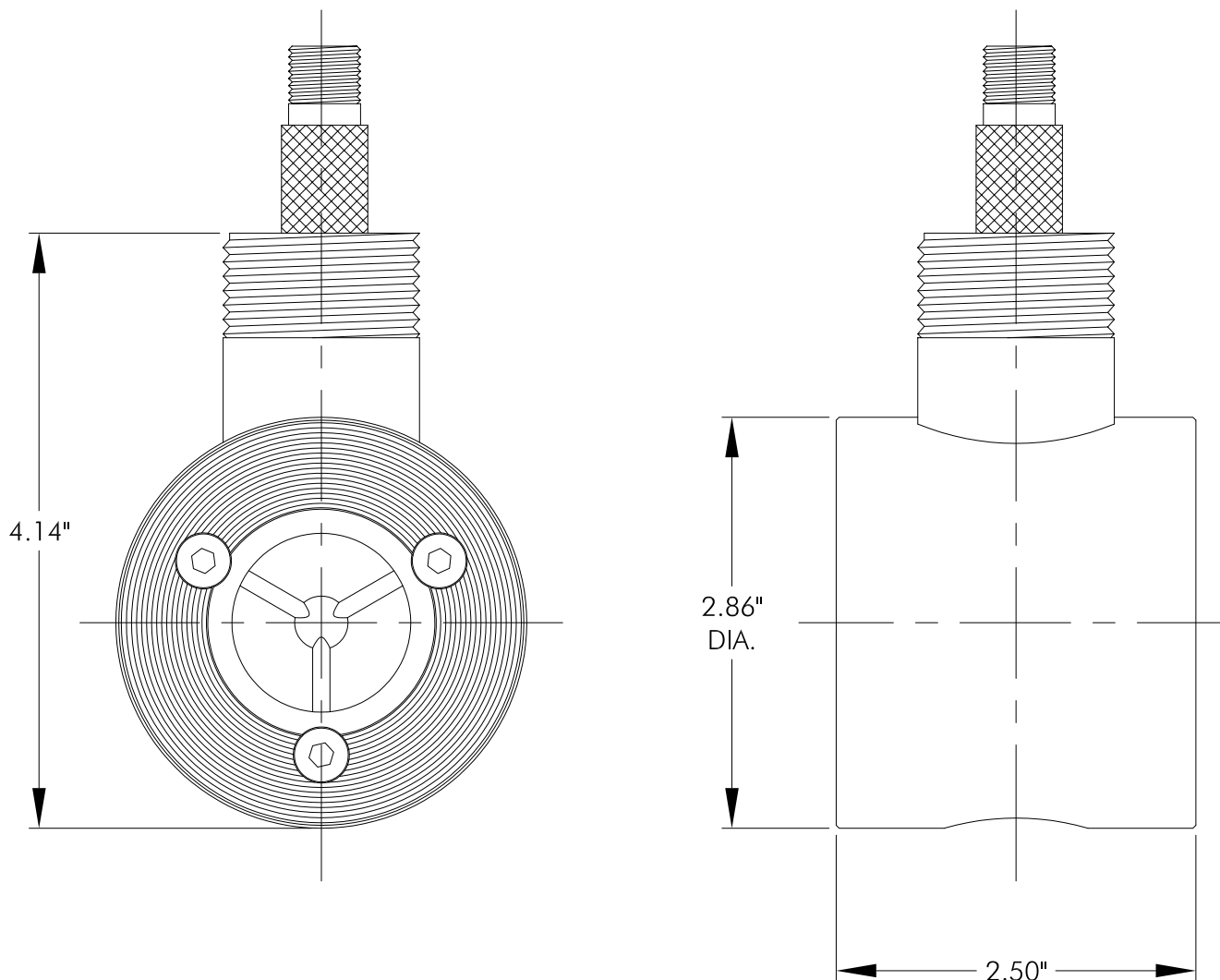
P.O. Box 12128

Odessa, TX 79768

Phone: 432-366-8699 Fax: 432-366-1106

E-mail: rkw@eddevices.com Website: www.eddevices.com





NOTE: DRAWING NOT TO SCALE

SPECIFICATIONS:

FLOW RATE: 5-50 GPM

PRESSURE RATING: AS PER FLANGE RATING

NOTE:

1" TURBINE REPAIR KIT PART NUMBER: 6.101

FLOW METER INSTALLATION DRAWING

1" x 1.5" BETWEEN FLANGE TURBINE FLOW METER WITH RAISED FACE ENDS, PART NO. 6.1510

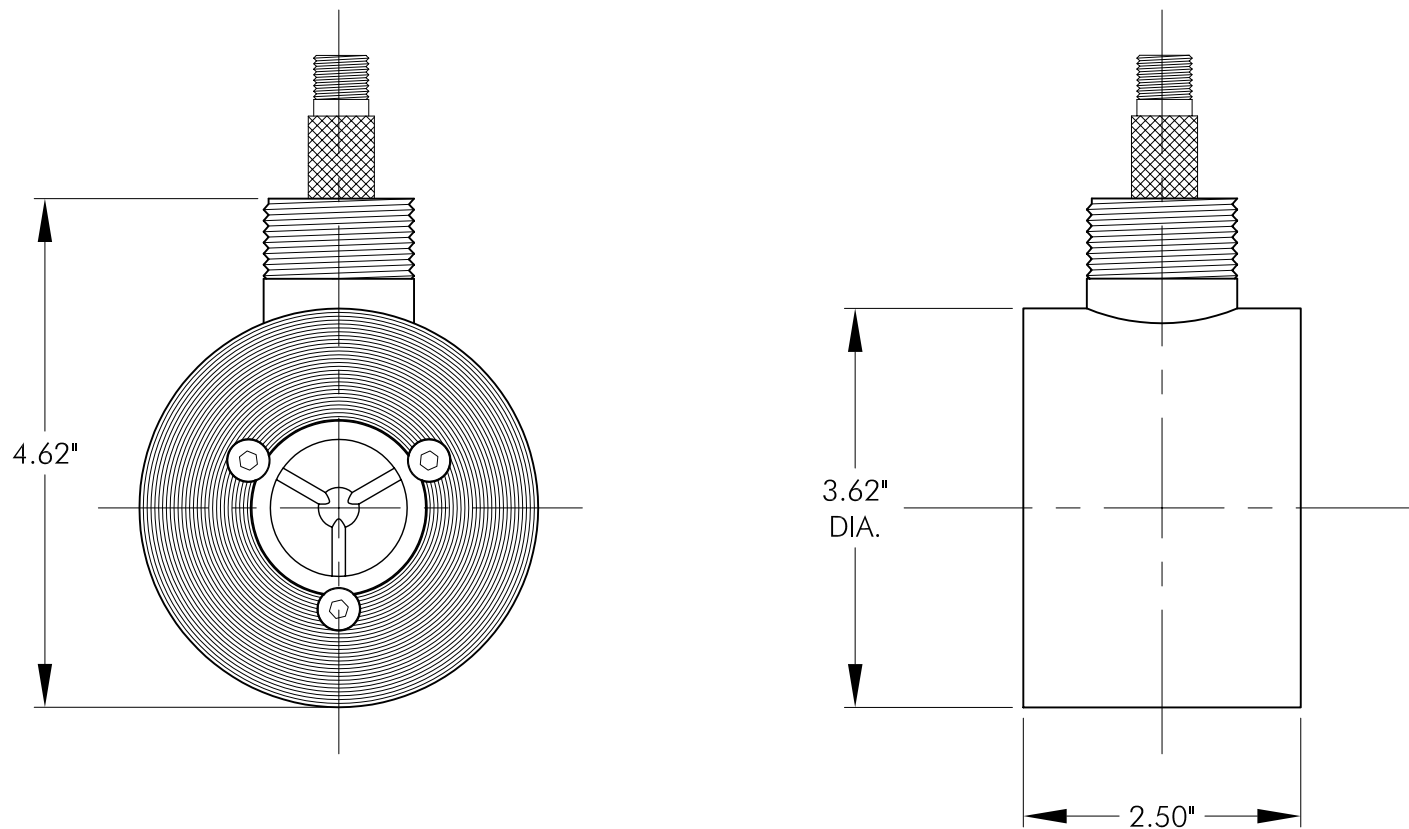
P.O. Box 12128

Odessa, TX 79768

Phone: 432-366-8699 Fax: 432-366-1106

E-mail: rkw@eddevices.com Website: www.eddevices.com





NOTE: DRAWING NOT TO SCALE

SPECIFICATIONS:

FLOW RATE: 5-50 GPM

PRESSURE RATING: AS PER FLANGE RATING

NOTE:

1" TURBINE REPAIR KIT PART NUMBER: 6.101

FLOW METER INSTALLATION DRAWING

1" x 2" BETWEEN FLANGE TURBINE FLOW METER WITH RAISED FACE ENDS, PART NO. 6.1001

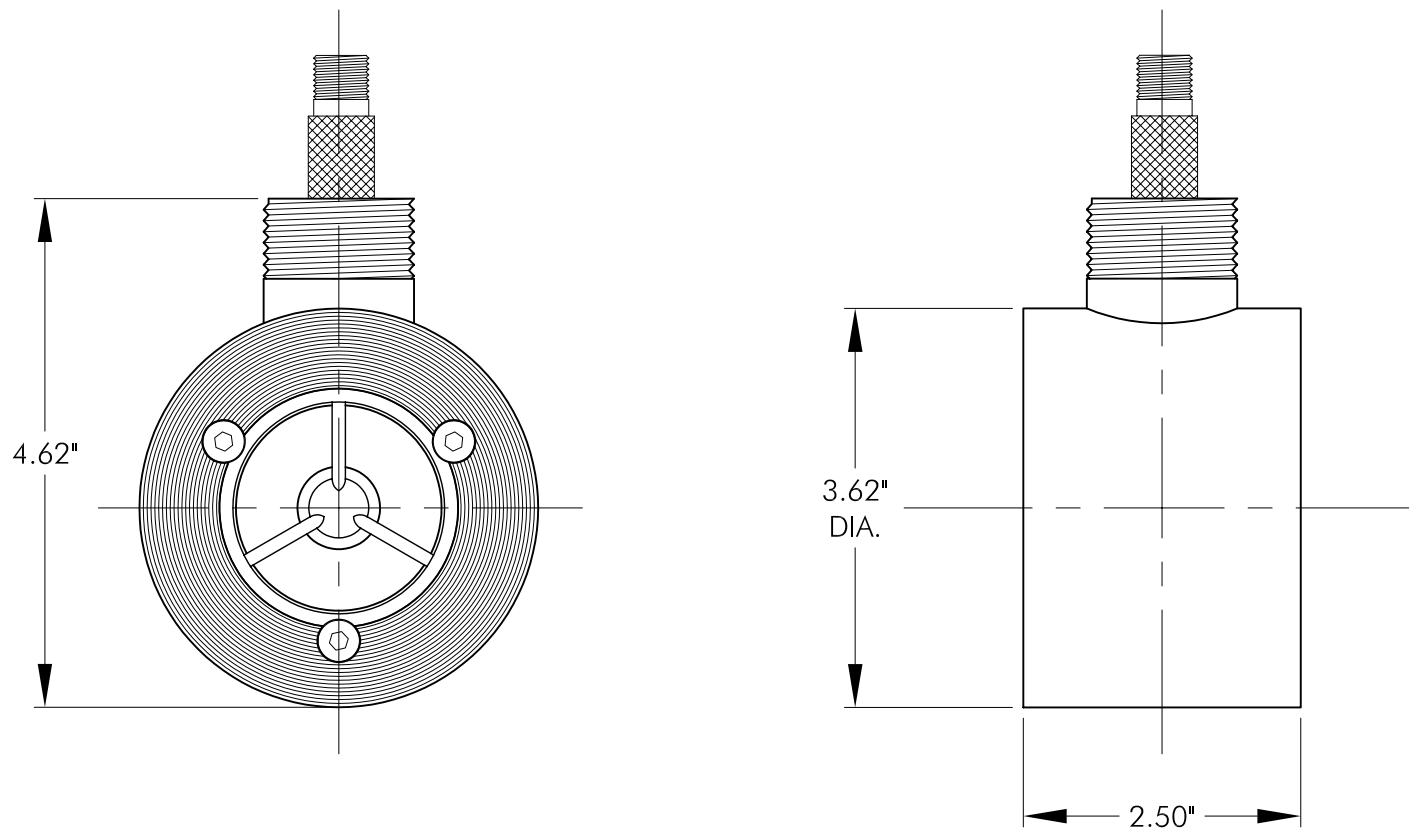
P.O. Box 12128

Odessa, TX 79768

Phone: 432-366-8699 Fax: 432-366-1106

E-mail: rkw@eddevices.com Website: www.eddevices.com





NOTE: DRAWING NOT TO SCALE

SPECIFICATIONS:

FLOW RATE: 5-50 GPM

PRESSURE RATING: AS PER FLANGE RATING

NOTE:

1" TURBINE REPAIR KIT PART NUMBER: 6.100

FLOW METER INSTALLATION DRAWING

1" X 2" BETWEEN FLANGE TURBINE FLOW METER WITH RAISED FACE, PART NO. 6.1000

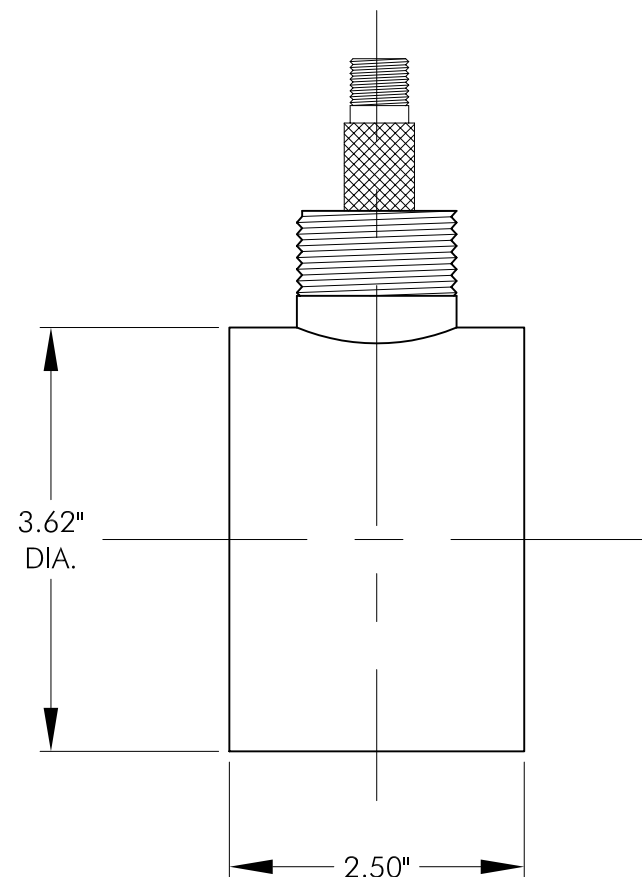
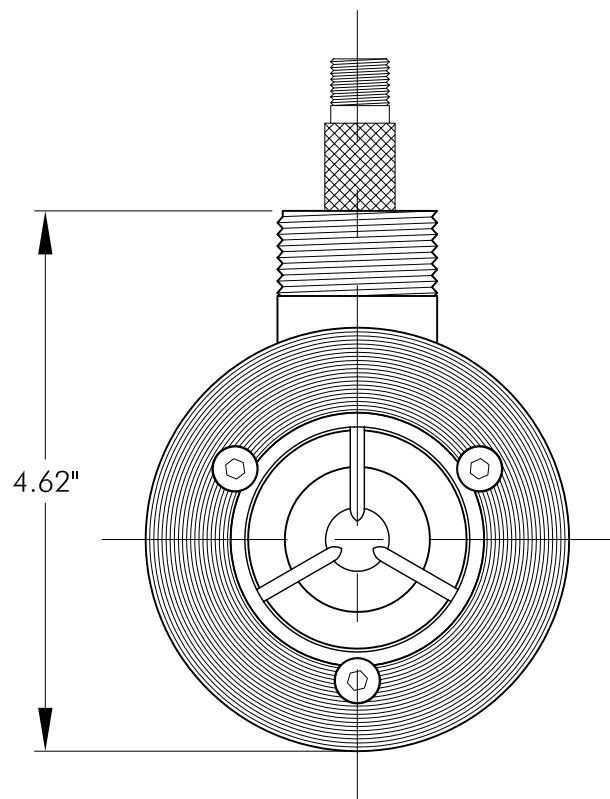
P.O. Box 12128

Odessa, TX 79768

Phone: 432-366-8699 Fax: 432-366-1106

E-mail: rkw@eddevices.com Website: www.eddevices.com





NOTE: DRAWING NOT TO SCALE

SPECIFICATIONS:

FLOW RATE: 15-180 GPM

PRESSURE RATING: AS PER FLANGE RATING

NOTE:

1.5" TURBINE REPAIR KIT PART NUMBER: 6.150

FLOW METER INSTALLATION DRAWING

1.5" x 2" BETWEEN FLANGE TURBINE FLOW METER WITH RAISED FACE ENDS, PART NO. 6.1510

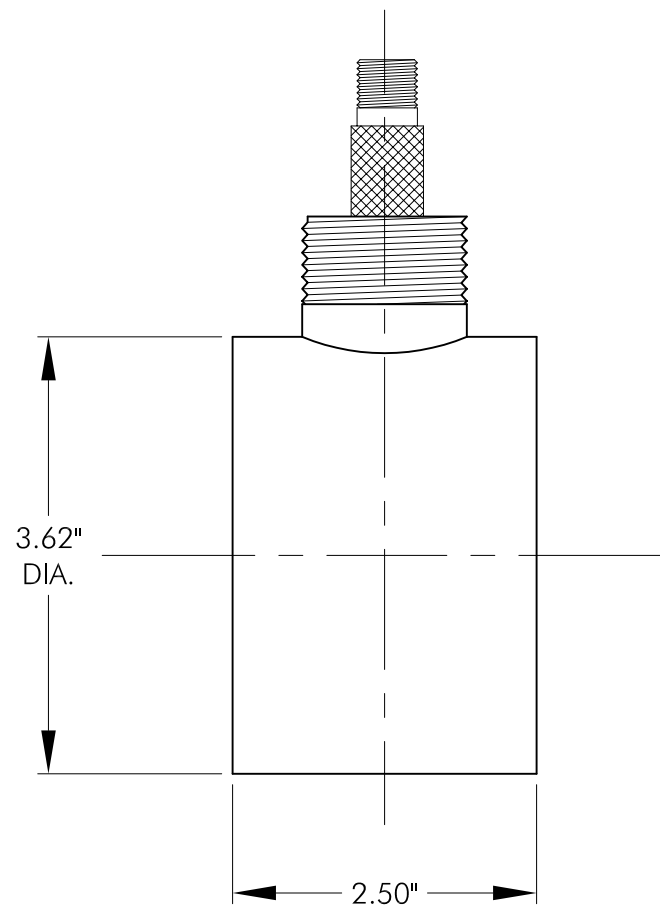
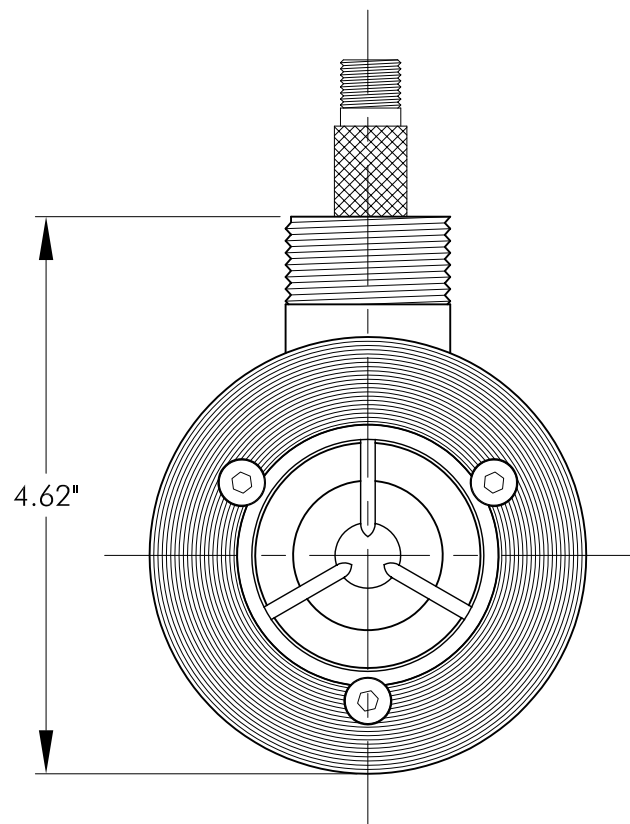
P.O. Box 12128

Odessa, TX 79768

Phone: 432-366-8699 Fax: 432-366-1106

E-mail: rkw@eddevices.com Website: www.eddevices.com





NOTE: DRAWING NOT TO SCALE

SPECIFICATIONS:

FLOW RATE: 40-400 GPM

PRESSURE RATING: AS PER FLANGE RATING

NOTE:

2" TURBINE REPAIR KIT PART NUMBER: 6.250

FLOW METER INSTALLATION DRAWING

2" x 2" BETWEEN FLANGE TURBINE FLOW METER WITH RAISED FACE ENDS, PART NO. 6.2000

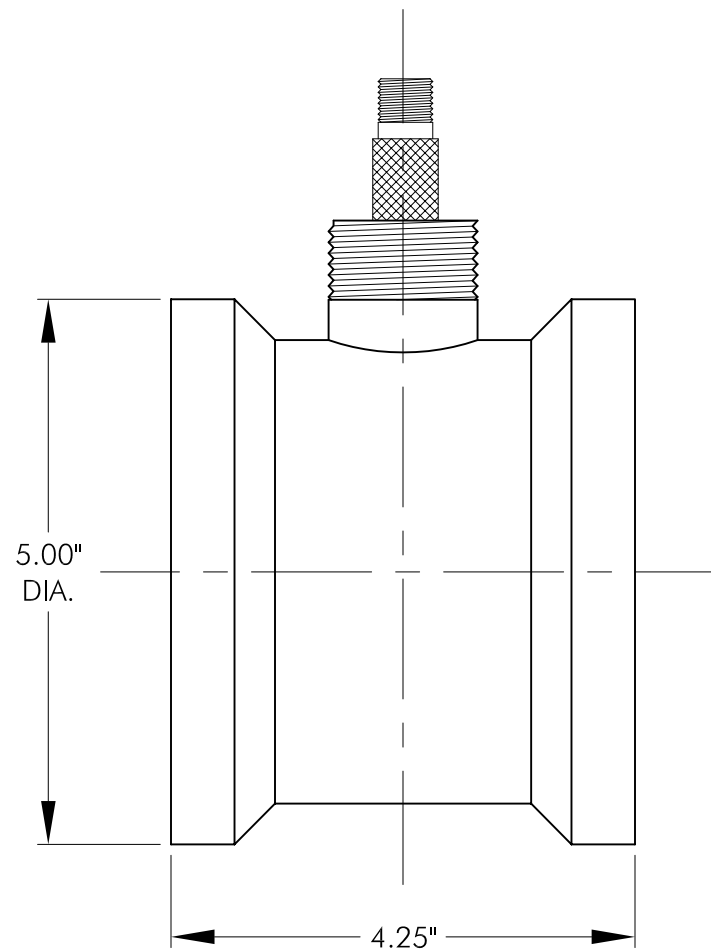
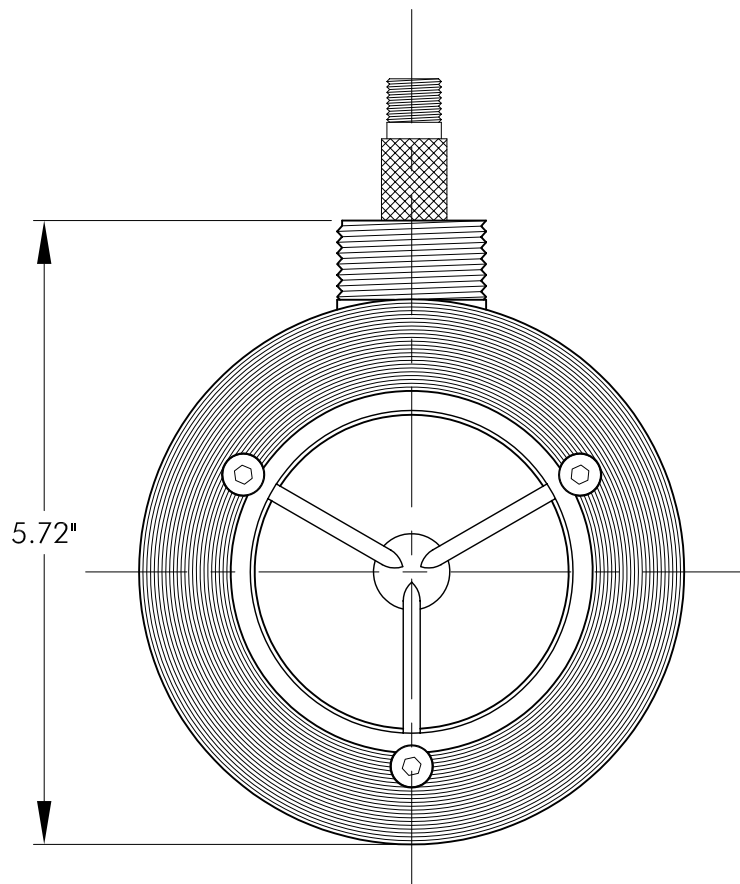
P.O. Box 12128

Odessa, TX 79768

Phone: 432-366-8699 Fax: 432-366-1106

E-mail: rkw@eddevices.com Website: www.eddevices.com





NOTE: DRAWING NOT TO SCALE

SPECIFICATIONS:

FLOW RATE: 60-600 GPM

PRESSURE RATING: AS PER FLANGE RATING

NOTE:

3" TURBINE REPAIR KIT PART NUMBER: 6.350

FLOW METER INSTALLATION DRAWING

3" x 3" BETWEEN FLANGE TURBINE FLOW METER WITH RAISED FACE ENDS, PART NO. 6.3000

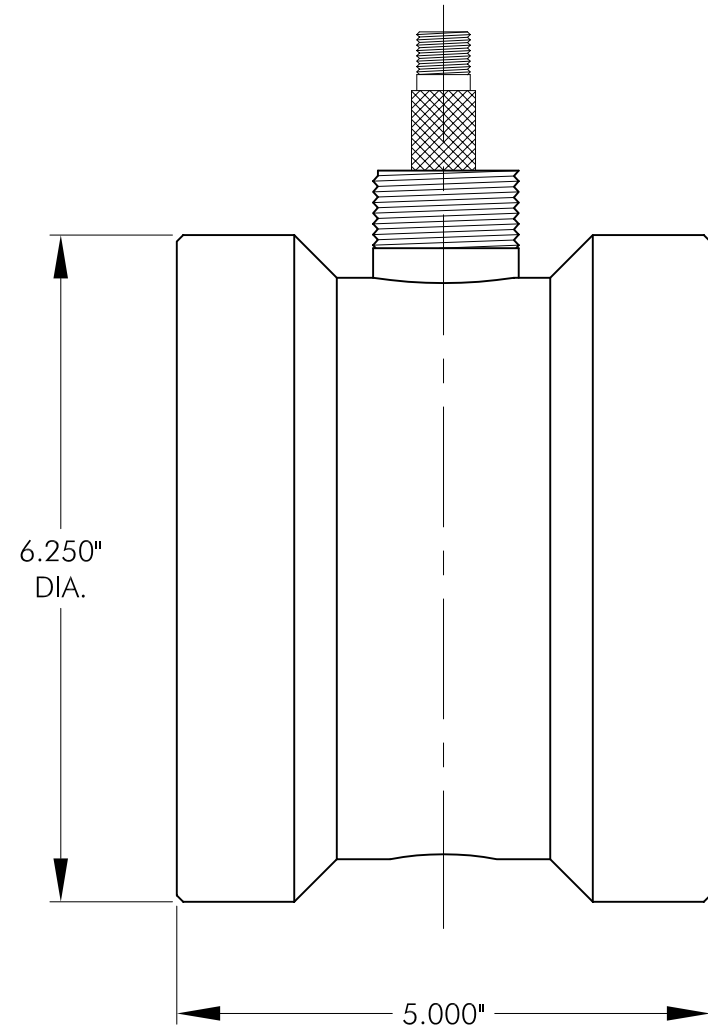
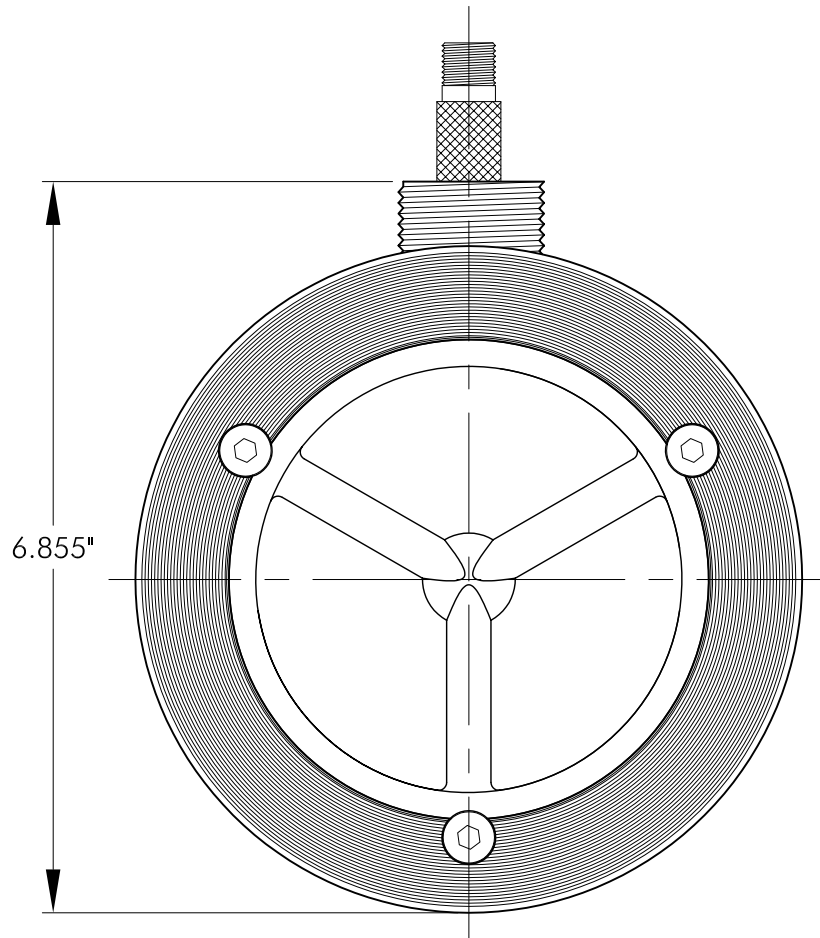
P.O. Box 12128

Odessa, TX 79768

Phone: 432-366-8699 Fax: 432-366-1106

E-mail: rkw@eddevices.com Website: www.eddevices.com





NOTE: DRAWING NOT TO SCALE

SPECIFICATIONS:

FLOW RATE: 100-1200 GPM

PRESSURE RATING: AS PER FLANGE RATING

NOTE:

4" TURBINE REPAIR KIT PART NUMBER: 6.450

FLOW METER INSTALLATION DRAWING

4" x 4" BETWEEN FLANGE TURBINE FLOW METER WITH RAISED FACES, PART NO. 6.4000

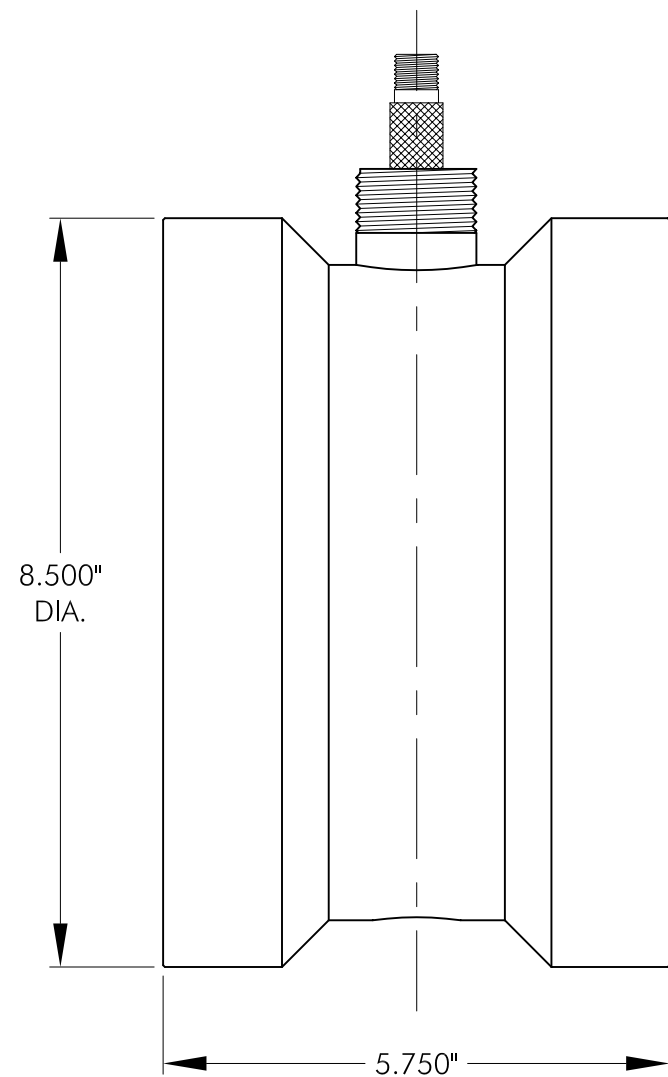
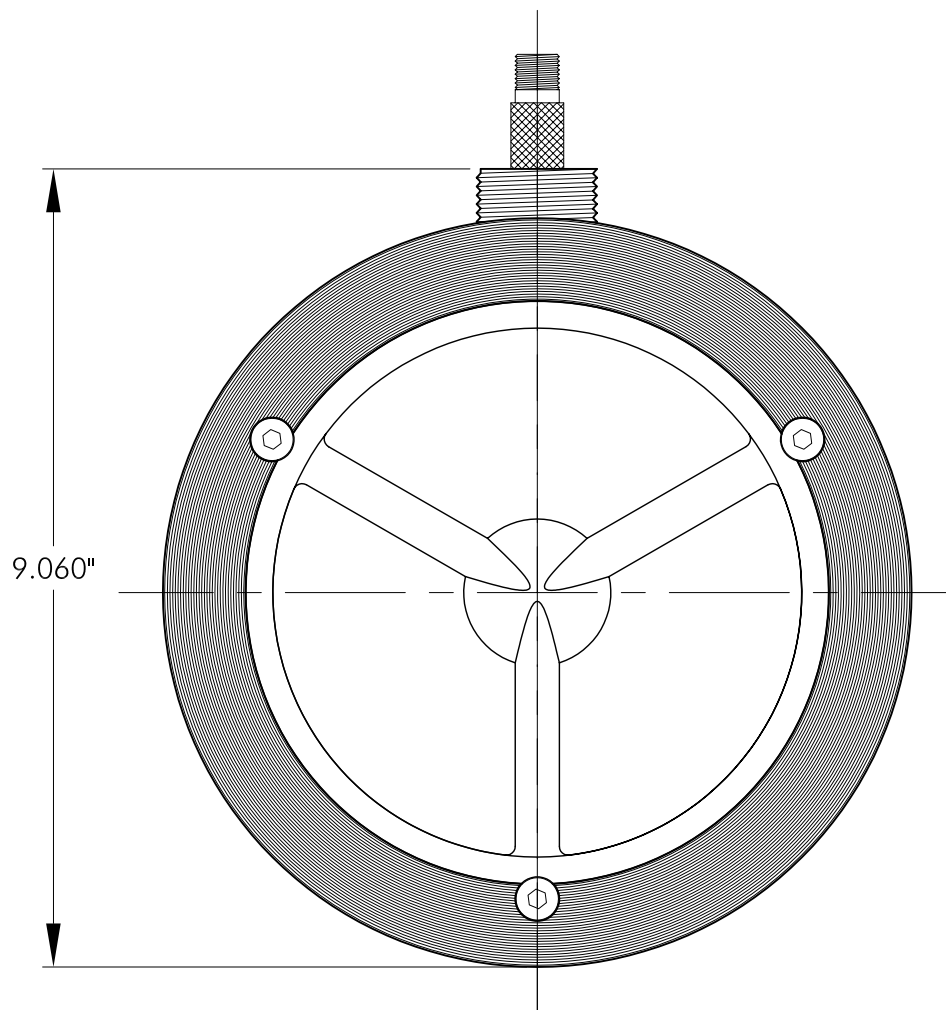
P.O. Box 12128

Odessa, TX 79768

Phone: 432-366-8699 Fax: 432-366-1106

E-mail: rkw@eddevices.com Website: www.eddevices.com





NOTE: DRAWING NOT TO SCALE

SPECIFICATIONS:

FLOW RATE: 200-2500 GPM

PRESSURE RATING: AS PER FLANGE RATING

NOTE:

6" TURBINE REPAIR KIT PART NUMBER: 6.650

FLOW METER INSTALLATION DRAWING

6" x 6" BETWEEN FLANGE FLOW METER WITH RAISED FACES, PART NO. 6.6000

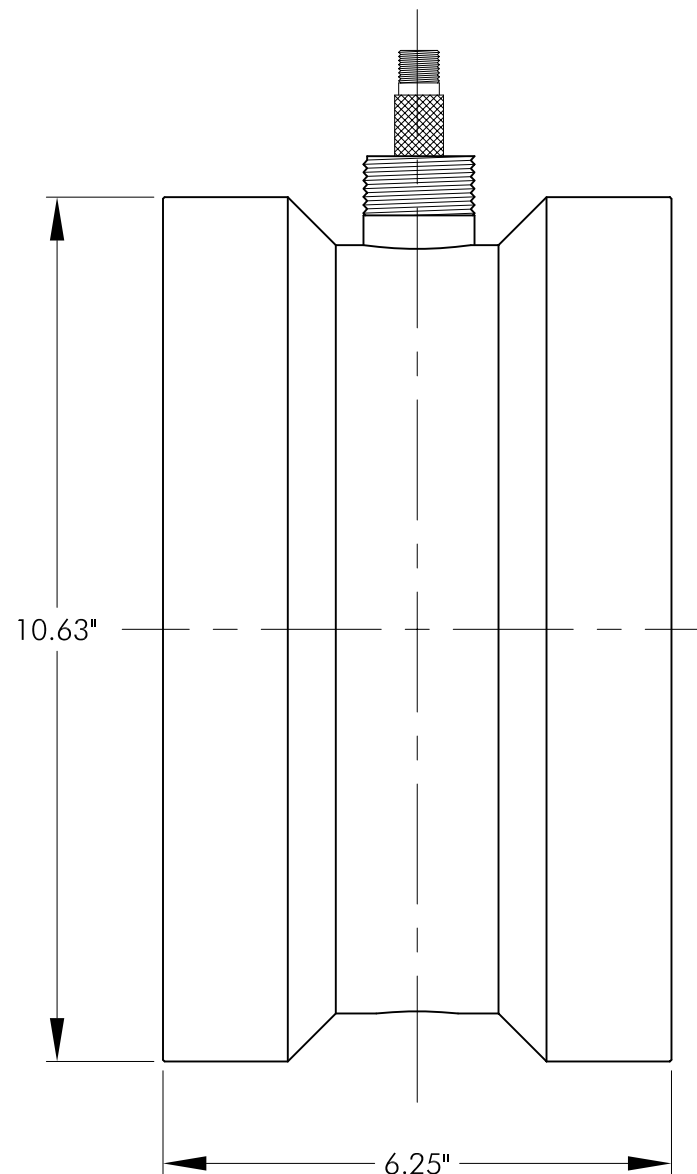
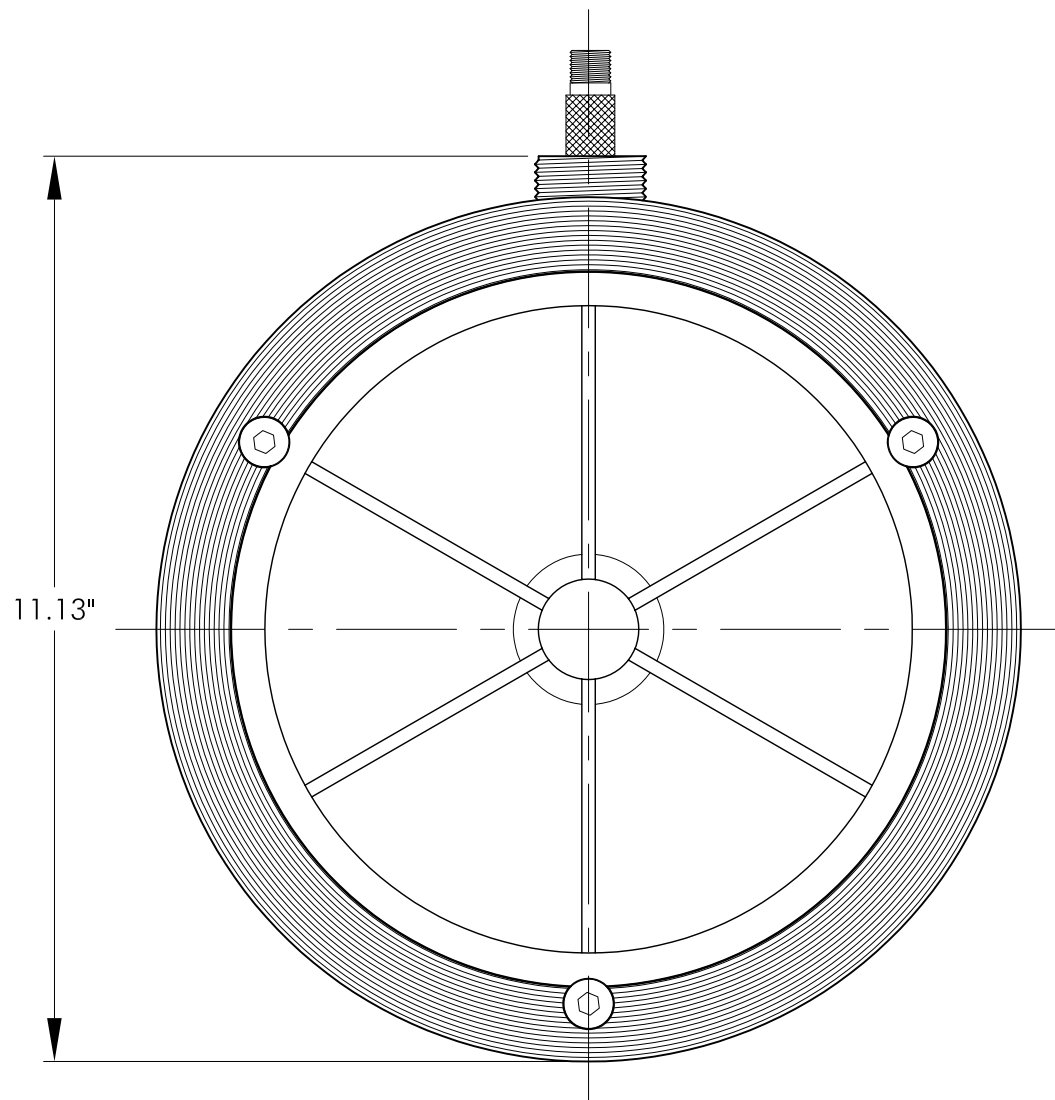
P.O. Box 12128

Odessa, TX 79768

Phone: 432-366-8699 Fax: 432-366-1106

E-mail: rkw@eddevices.com Website: www.eddevices.com





NOTE: DRAWING NOT TO SCALE

SPECIFICATIONS:

FLOW RATE: 350-3500 GPM

PRESSURE RATING: AS PER FLANGE RATING

NOTE:

8" TURBINE REPAIR KIT PART NUMBER: 6.850

FLOW METER INSTALLATION DRAWING

8" x 8" BETWEEN FLANGE FLOW METER WITH RAISED FACE ENDS, PART NO. 6.8000

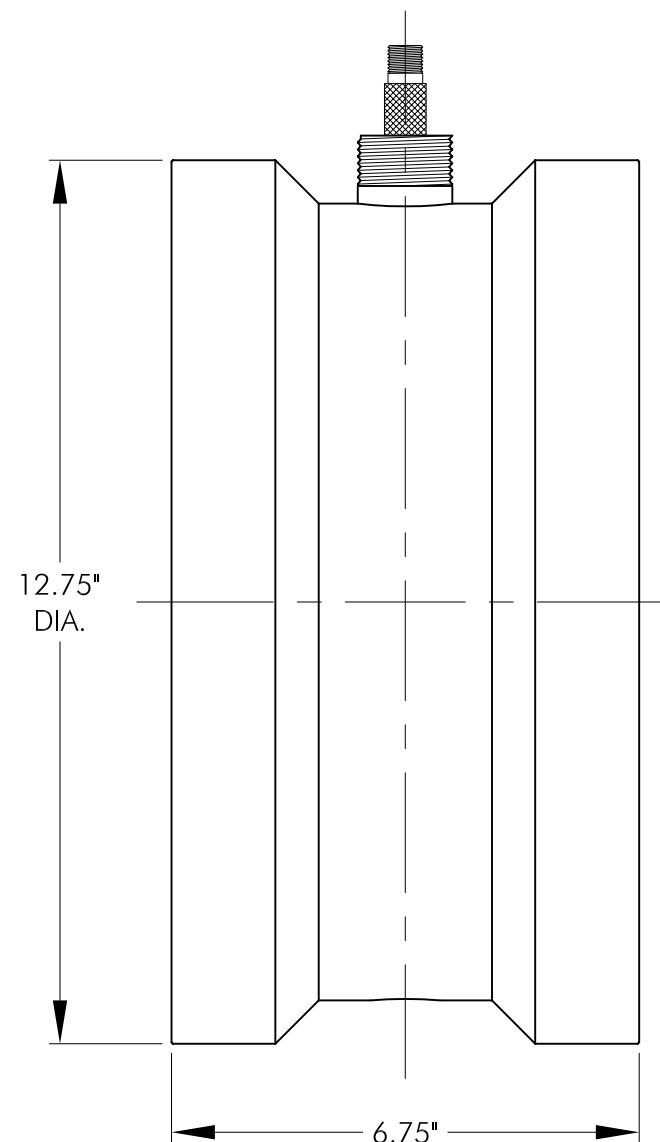
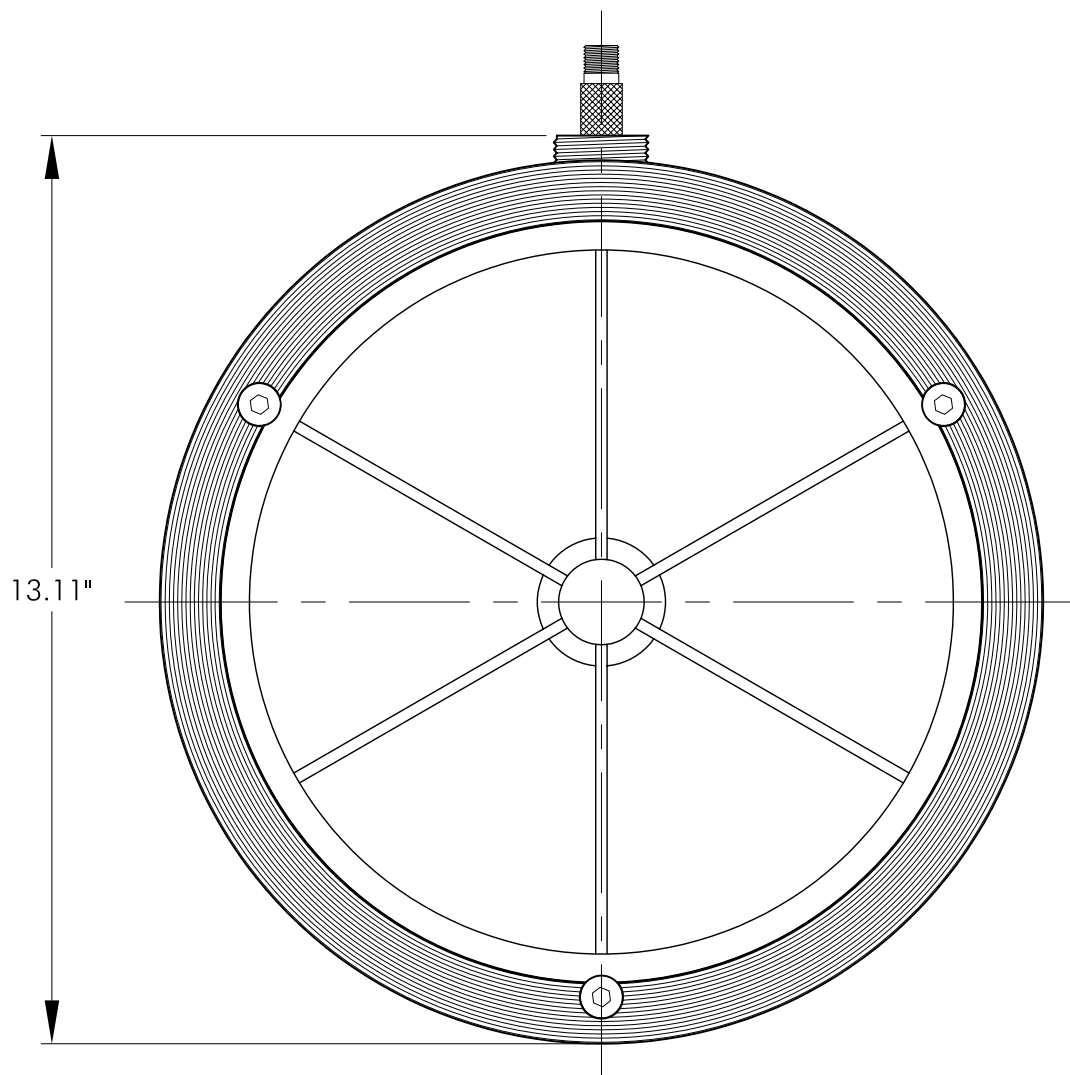
P.O. Box 12128

Odessa, TX 79768

Phone: 432-366-8699 Fax: 432-366-1106

E-mail: rkw@eddevices.com Website: www.eddevices.com





SPECIFICATIONS:

FLOW RATE: 500-5500 GPM

PRESSURE RATING: AS PER FLANGE RATING

NOTE:

10" TURBINE REPAIR KIT PART NUMBER: 6.10500

FLOW METER INSTALLATION DRAWING

10" x 10" BETWEEN FLANGE FLOW METER WITH RAISED FACE ENDS, PART NO. 6.10000

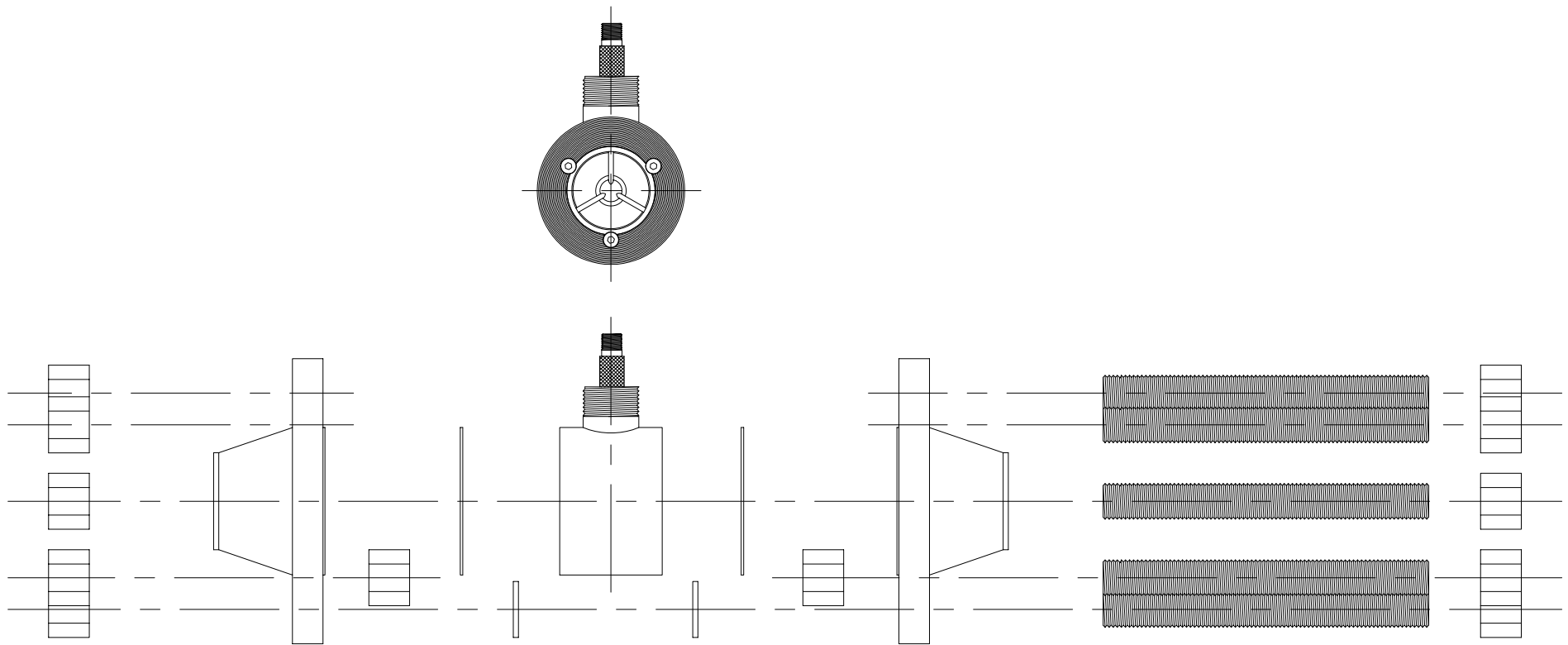
P.O. Box 12128

Odessa, TX 79768

Phone: 432-366-8699 Fax: 432-366-1106

E-mail: rkw@eddevices.com Website: www.eddevices.com





NOTE: DRAWING NOT TO SCALE

SPECIFICATIONS:
 FLOW RATE: PER METER
 PRESSURE RATING: AS PER FLANGE RATING

NOTE:
 METER AND FLANGE ASSEMBLY SHOWN

FLOW METER ASSEMBLY DRAWING

1" - 8" BETWEEN FLANGE METER WITH RAISED FACE ENSD FOR 150- 1500 LBS. FLANGES

P.O. Box 12128
 Odessa, TX 79768
 Phone: 432-366-8699 Fax: 432-366-1106
 E-mail: rkw@eddevices.com Website: www.eddevices.com





Electronic Data Devices

Turbine Flow Meters



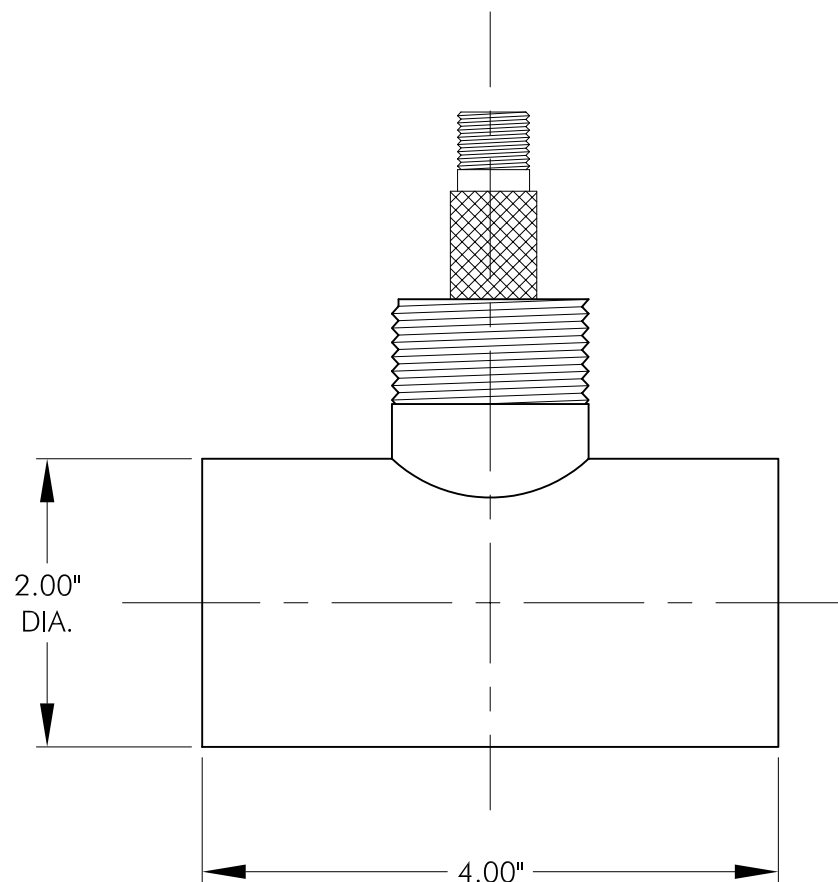
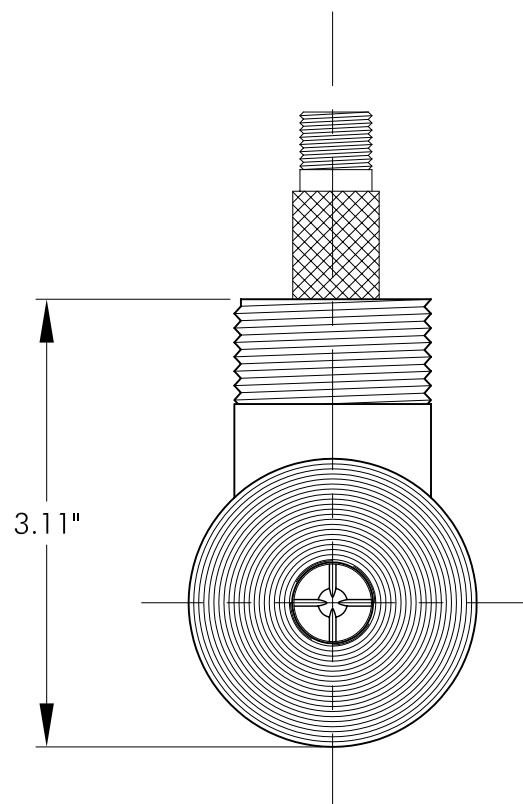
4" Long BF Turbine Flow Meters

Electronic Data Devices offers a complete line of between flange turbine flow meters that are available with ranges from 0.3 GPM to 50 GPM covering a wide range of measurement applications. Our turbine flow meters are manufactured to the highest quality standards. Some of the typical applications include: oilfield waterflood, production, well servicing, pipelines, mining, chemicals, food and beverage industry, and most other liquid applications.

4" long BF meters are available in the sizes below.

The working pressure for the meter is determined by the flanges used. All sizes are compatible with 150 pound to 1500 pound flanges.

3/8" x 1" x 4" 1/2" x 1" x 4" 3/4" x 1" x 4" 7/8" x 1" x 4" 1" x 1" x 4"



NOTE: DRAWING NOT TO SCALE

SPECIFICATIONS:

FLOW RATE: 0.3-3 GPM

PRESSURE RATING: AS PER FLANGE RATING

NOTE:

3/8" TURBINE REPAIR KIT PART NUMBER: 5.037

FLOW METER INSTALLATION DRAWING

3/8" x 1" x 4" BETWEEN FLANGE FLOW METER WITH RAISED FACE ENDS, PART NO. 5.0375BF4

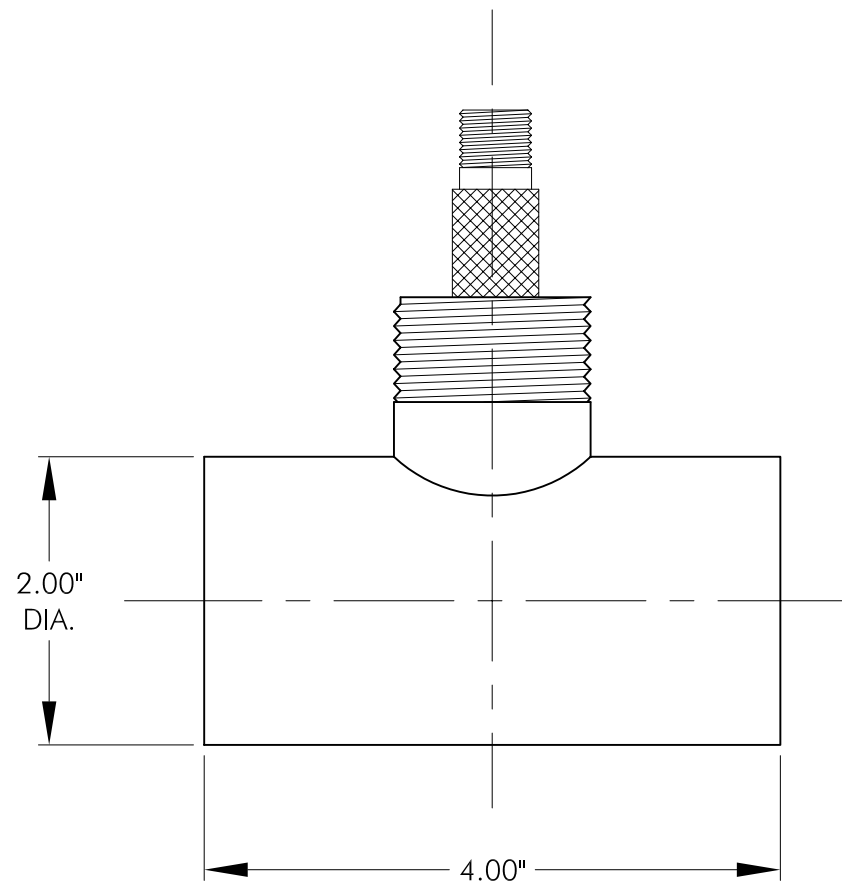
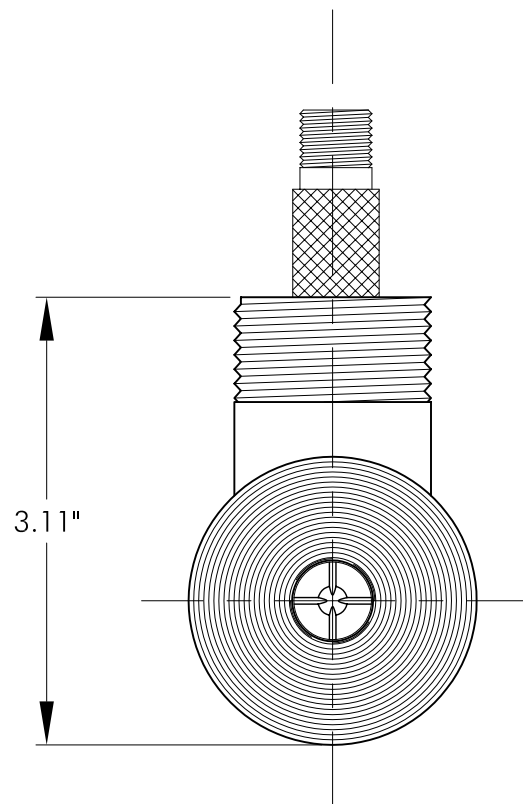
P.O. Box 12128

Odessa, TX 79768

Phone: 432-366-8699 Fax: 432-366-1106

E-mail: rk@eddevices.com Website: www.eddevices.com





NOTE: DRAWING NOT TO SCALE

SPECIFICATIONS:

FLOW RATE: 0.75-7.5 GPM

PRESSURE RATING: AS PER FLANGE RATING

NOTE:

1/2" TURBINE REPAIR KIT PART NUMBER: 5.050

FLOW METER INSTALLATION DRAWING

1/2" x 1" x 4" BETWEEN FLANGE FLOW METER WITH RAISED FACE ENDS, PART NO. 5.0500BF4

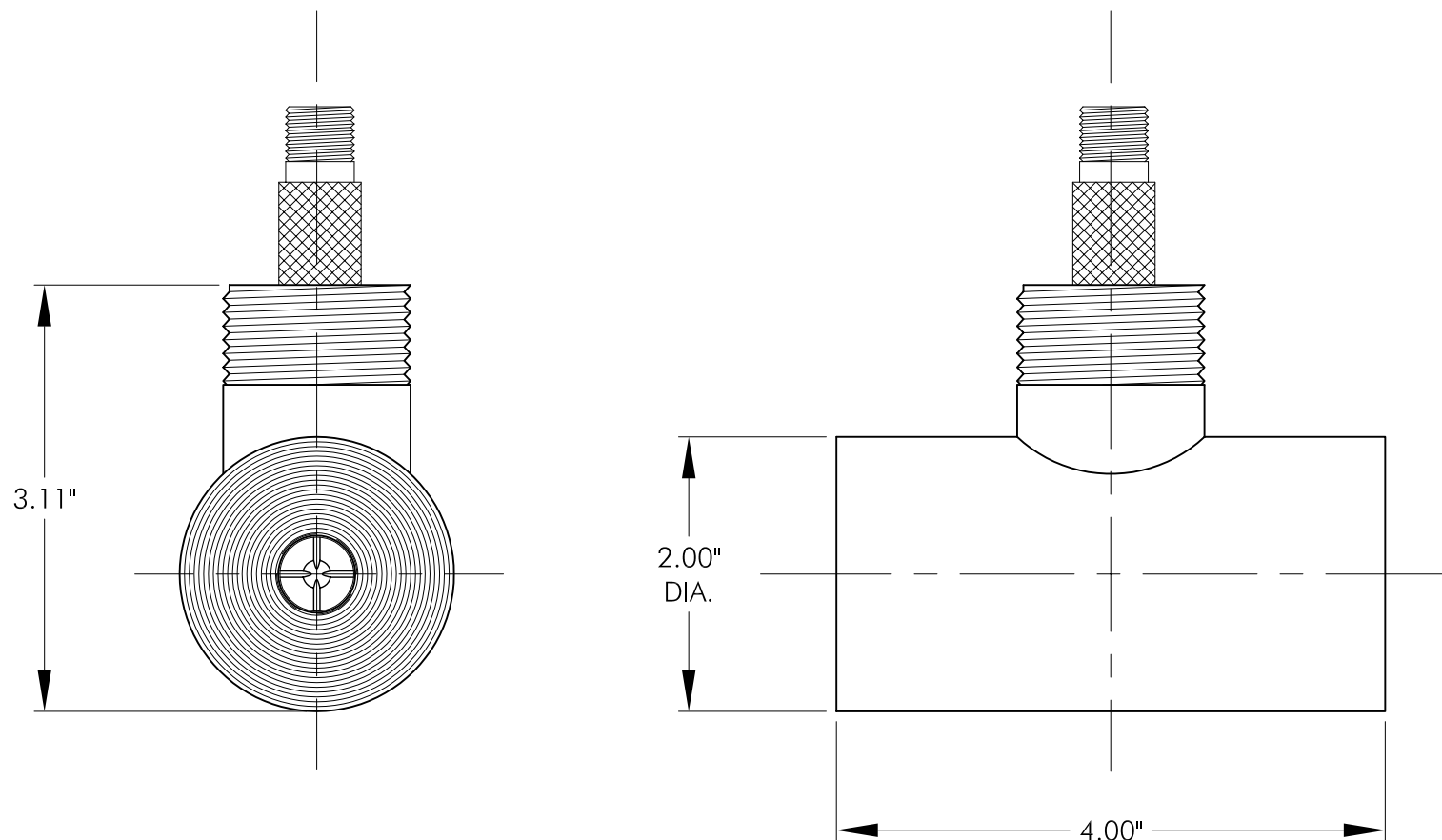
P.O. Box 12128

Odessa, TX 79768

Phone: 432-366-8699 Fax: 432-366-1106

E-mail: rkw@eddevices.com Website: www.eddevices.com





NOTE: DRAWING NOT TO SCALE

SPECIFICATIONS:

FLOW RATE: 2-15 GPM

PRESSURE RATING: AS PER FLANGE RATING

NOTE:

3/4" TURBINE REPAIR KIT PART NUMBER: 5.075

FLOW METER INSTALLATION DRAWING

3/4" x 1" x 4" BETWEEN FLANGE FLOW METER WITH RAISED FACE ENDS, PART NO. 5.0750BF4

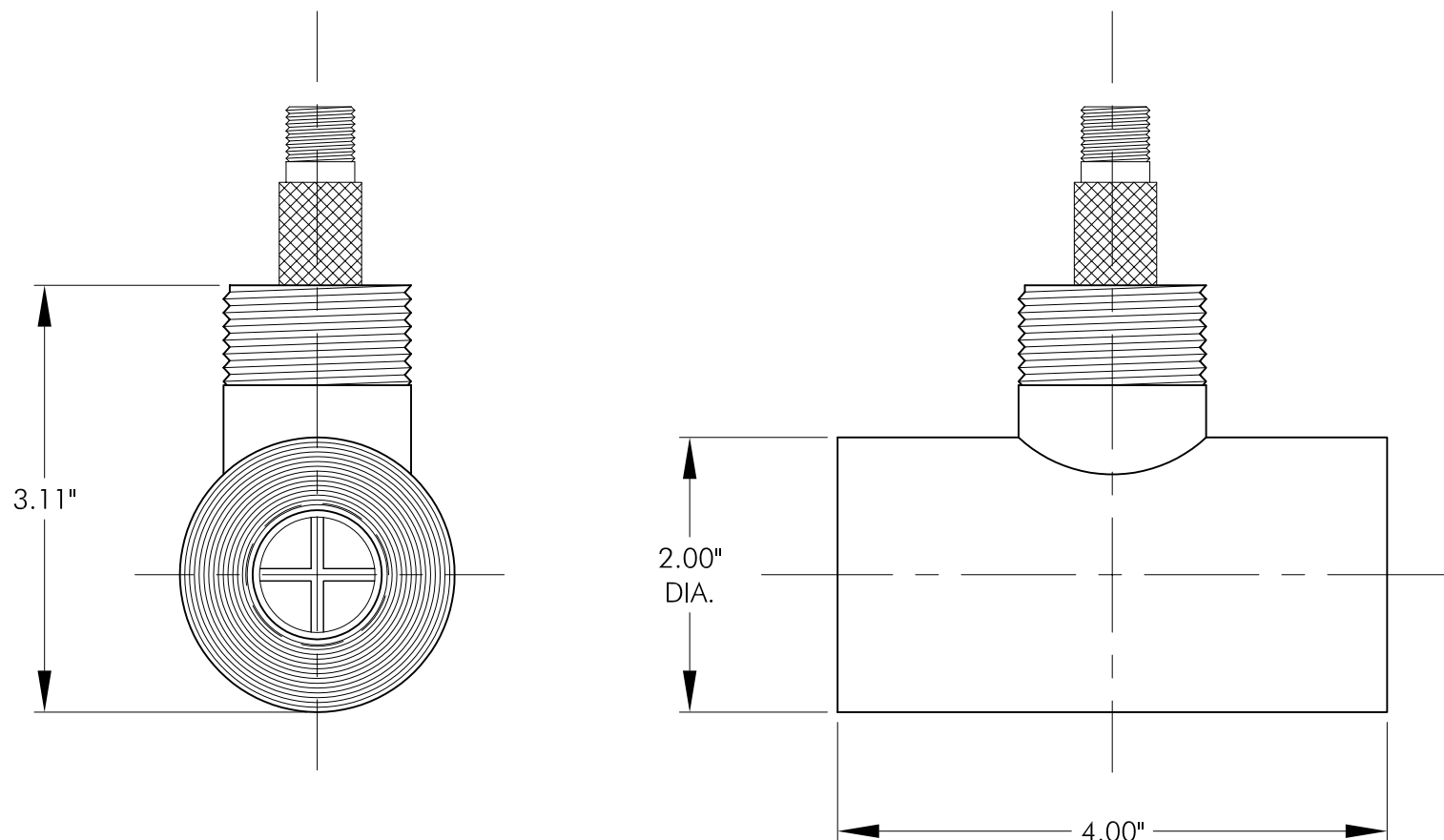
P.O. Box 12128

Odessa, TX 79768

Phone: 432-366-8699 Fax: 432-366-1106

E-mail: rkw@eddevices.com Website: www.eddevices.com





NOTE: DRAWING NOT TO SCALE

SPECIFICATIONS:

FLOW RATE: 3-30 GPM

PRESSURE RATING: AS PER FLANGE RATING

NOTE:

7/8" TURBINE REPAIR KIT PART NUMBER: 5.087

FLOW METER INSTALLATION DRAWING

7/8" x 1" x 4" BETWEEN FLANGE FLOW METER WITH RAISED FACE ENDS, PART NO. 5.0875BF4

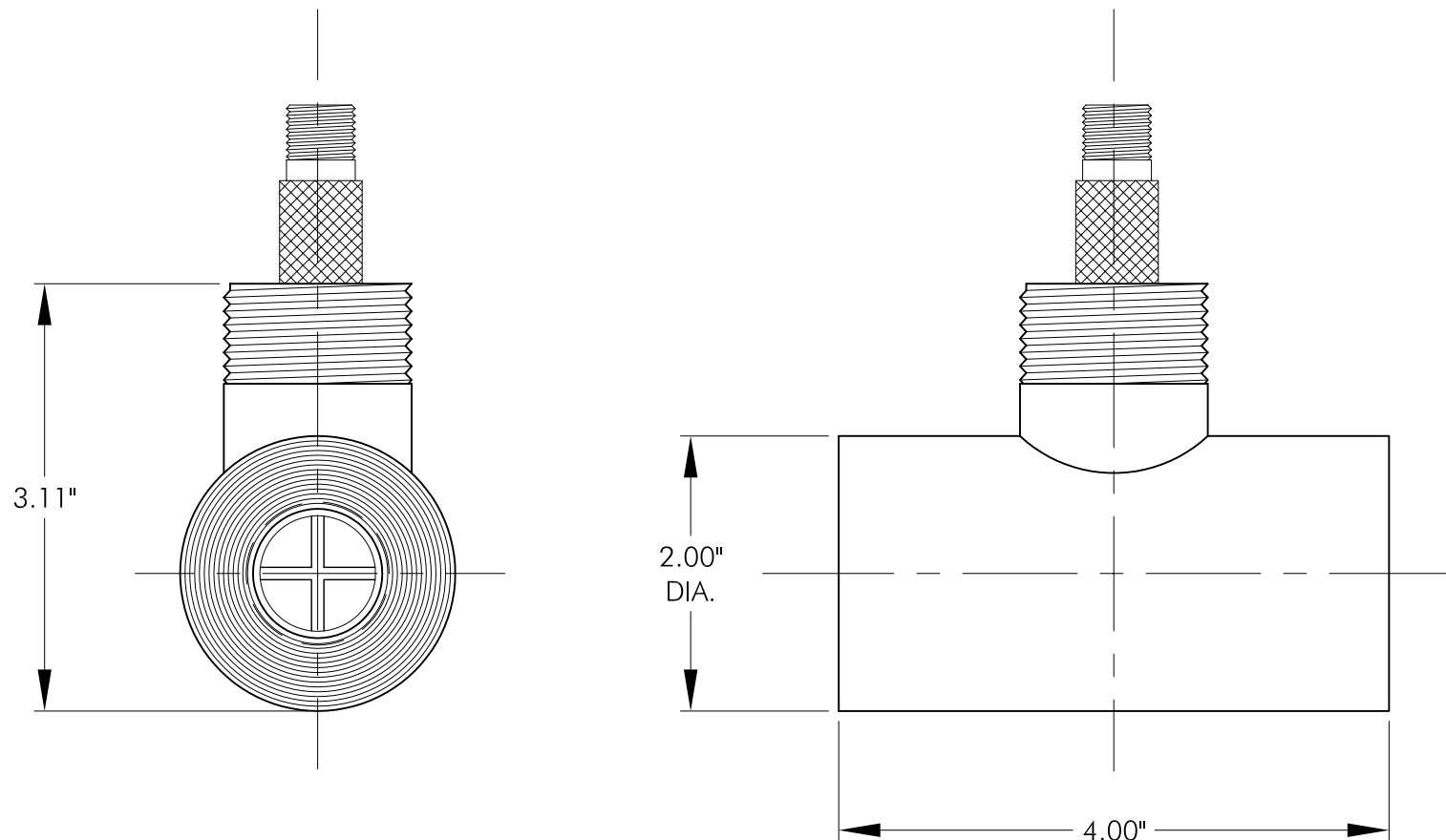
P.O. Box 12128

Odessa, TX 79768

Phone: 432-366-8699 Fax: 432-366-1106

E-mail: rkw@eddevices.com Website: www.eddevices.com





NOTE: DRAWING NOT TO SCALE

SPECIFICATIONS:

FLOW RATE: 5-50 GPM

PRESSURE RATING: AS PER FLANGE RATING

NOTE:

1" TURBINE REPAIR KIT PART NUMBER: 5.100

FLOW METER INSTALLATION DRAWING

1" x 1" x 4" BETWEEN FLANGE TURBINE FLOW METER WITH RAISED FACE ENDS, PART NO. 5.1001BF4

P.O. Box 12128

Odessa, TX 79768

Phone: 432-366-8699 Fax: 432-366-1106

E-mail: rkw@eddevices.com Website: www.eddevices.com

